

BMW Z4  
Roadster

sDrive28i  
sDrive35i  
sDrive35is



The Ultimate  
Driving Machine®



تلفن شبانه روزی: ۰۲۱-۸۸۸۶۲۰۸۵

FarmaSOS.com

# THE BMW Z4 ROADSTER.

## OUTRUN THE ORDINARY.

**BMW EfficientDynamics**  
Less emissions. More driving pleasure.



# EXHILARATION IS IN OUR WHEELHOUSE.

When it comes to explaining the unparalleled thrills of the BMW Z4 Roadster, superlatives take a back seat. There is no comparison to the feeling of piloting a low-slung, track-honed BMW with the top down, as it delivers mile after mile of everything drivers most desire. With a choice of powerful yet efficient engine options, exquisite and luxurious appointments, and a sleek and attractive design, the Z4 simply leaves any competition far behind. Get in and discover our most compelling formula for excitement on the road.



فارسوس: ۰۲۱-۸۸۸۶۲۰۸۵

FarmaSOS.com



## The BMW Z4 Roadster

**DEVELOPED AND  
DRIVEN TO INSPIRE.**

- 06 Design**  
Engineering marvel, emotional wonder.
- 12 Driving dynamics**  
Born to compete, destined for glory.
- 22 Interior environment**  
Catering to your every whim.
- 24 Personalizable retractable hardtop**  
Freedom – a top priority.
- 26 Performance technologies**  
Driving technology that springs to life.
- 28 Hyper Orange Package**  
Bring out the beauty in this high-performance beast.
- 30 Motorsport heritage**  
BMW Z4 GTE to race in ALMS.

## Technology

**DEFINING EMOTION  
IN MOTION.**

- 32 BMW ConnectedDrive®**  
So connected, you're free.
- 36 BMW EfficientDynamics**  
Technology that increases excitement and reduces fuel consumption and emissions.
- 38 BMW engine technology**  
A heritage of innovation.
- 40 Chassis and performance technology**  
Systems to enhance driving pleasure.
- 42 Active and passive safety features**  
Innovative systems for enhanced driving confidence and security.

## Equipment

**AS INDIVIDUAL AS  
YOUR DREAMS.**

- 44 BMW Z4 sDrive35is**
- 46 Hyper Orange Package**
- 48 M Sport Package**
- 50 Ivory White Burnt Sienna Package**
- 52 Exterior colors, upholstery colors and materials, and interior trims**
- 54 Equipment features and options**
- 60 Original BMW Accessories**



## Editorial

# IT MAKES ITS POINT WITH EVERY DRIVE.

Why a roadster? Why seek the pure, unadulterated thrill in every mile? Why the sleek two-seat styling, slung lean and low to the road? Once you get behind the wheel of the BMW Z4 Roadster, all answers become apparent and all doubts are erased. There's the time-honored formula: sweeping long hood, low seating position and powerful engine, which drives the senses to their limits. There are the muscular styling and lithe frame, which deliver matchless road responsiveness and handling. And there's the cutting-edge technology that BMW puts into every vehicle, making an already impressive driving performance a truly breathtaking experience. Once you've chosen the way of the BMW Z4 Roadster, all your questions disappear.

[bmwusa.com/Z4](http://bmwusa.com/Z4)

## Overview

## SPECIFICATIONS AND SERVICES.

61 **Build Your Own**

62 **Technical data**

64 **BMW Services**

Exclusive offers for BMW customers.

For exclusive BMW photos, behind-the-scenes videos, and the latest BMW news:



Like us on Facebook®:  
[facebook.com/bmwusa](https://facebook.com/bmwusa)



Follow us on Twitter®:  
[twitter.com/bmwusa](https://twitter.com/bmwusa)



Find us on YouTube™:  
[youtube.com/bmwusa](https://youtube.com/bmwusa)



Follow us on TUMBLR®:  
[bmwusa.tumblr.com](https://bmwusa.tumblr.com)

امداد خودرو فارما

تلفن شبانه روزی: ۰۲۱-۸۸۸۶۲۰۸۵

FarmaSOS.com

امداد خودرو فارما

تلفن: ۰۲۱ ۸۸۸۶۲۰۸۵

FarmaSOS.com

# ENGINEERING MARVEL, EMOTIONAL WONDER.

Everything that defines the classic Z4 feel and ferocity on the road calls out to the driver's passions. Meticulous attention to detail is displayed in the headlights that stare down the pavement, joining forces with the broad kidney grille to reveal an intimidating, three-dimensional front facade. The tapered surrounds for the side indicator lights contribute to a more dynamic, sweeping side near the gills. It's all a part of the electrifying experience of the Z4 – a dedicated pleasure machine if there ever was one.



M BF 5067

parmasos.com

## FIND YOUR CENTER ON ANY ROAD.

If you're serious about driving, the BMW Z4 Roadster gives you more of what you want: freedom. Starting with the requisite near-perfect 50/50 weight distribution all BMWs share, the Z4 places its seats near the rear axle, so every curve puts a smile on the faces of both driver and passenger. From this ground-level platform, BMW offers three ways to determine your driving destiny. The Z4 sDrive28i delivers 240 hp and 260 lb-ft of torque, while the sDrive35i ups the output to 300 hp and 300 lb-ft of torque. Or go all out with the sDrive35is and command a whopping 335 hp and 332 lb-ft of torque. But whichever you choose, pure driving enjoyment is centered on you.

Get the latest information on BMW standard and optional features, packages and technical specifications. Visit [bmwusa.com](http://bmwusa.com), select the BMW model of your choice, and click on "Features & Specs."

امداد خودرو فارما

تلفن شبانه روزی: ۰۲۱-۸۸۸۶۲۰۸۵

FarmaSOS.com







امداد خودرو فاریا

تلفن مشاوره رایگان: ۰۲۱-۱۷۷۰۱۰۸۰

FarmaSOS.com



امداد خود و فارما

تلفن: ۰۲۱-۸۸۲۲۰۸۵

FarmaSP



# امداد خودرو فارما

تلفن شبانه روزی: ۰۸۵-۸۸۸۶۲۰۲۱

[FarmaSOS.com](http://FarmaSOS.com)



تلفن ختانه بوردی

armasos.com



# CHAMPION DNA TAKES A NEW SHAPE.

The BMW Z4 Roadster looks great from every angle – but none more so than doing what it was meant to do: tackling turns, powering through straightaways, and leaving drivers breathless. With its uniquely sporty design and motorsport-inspired DNA, the Z4 Roadster is the embodiment of the spirit of competition. In fact, the Z4 is taking that role literally, as BMW of North America debuted the Z4 GTE racecar in the 2013 American Le Mans Series (ALMS) with BMW Team RLL. It triumphed in two races and took second place in the Manufacturer's Championship. BMW hopes to better that performance in the new United SportsCar Championship's 2014 season with the Z4 GTLM. Now when you get behind the wheel of the Z4 Roadster, you can put race-bred levels of power, control and exhilaration in your hands.



## THREE WAYS TO CONQUER FREEWAYS.

The heart of the Z4's personality is its high-performance engine: inside a lean and sporty design, the powerplant brings drivers far past the line of expectations. Enabling the dreams of those behind the wheel is a choice of three TwinPower Turbo engine options. With 240 hp and 260 lb-ft of torque on tap, the Z4 sDrive28i exemplifies efficient muscle. BMW's award-winning 2.0-liter four-cylinder engine gives up nothing in terms of impressive top end and pickup, to the tune of 5.4 seconds from 0–60. The sDrive35i harnesses the universally praised 3.0-liter inline six-cylinder engine, cranking out 300 hp and 300 lb-ft of torque, with a 0–60 time of 5 seconds flat. And not to be outdone by its dynamic siblings, the sDrive35is offers a sport-tuned version of BMW's 3.0-liter inline six-cylinder engine, producing an amazing 335 hp and 332 lb-ft of torque, for a 0–60 time of just 4.8 seconds.

BMW AG test results. See page 62 for technical data.  
BMW urges you to obey all posted speed laws and always wear safety belts.

Get the latest information on BMW standard and optional features, packages and technical specifications. Visit [bmwusa.com](http://bmwusa.com), select the BMW model of your choice, and click on "Features & Specs."



فارس خودرو مارا

تلفن شماره فروش

FarmaSOS.com



امداد خودرو فارما

تلفن شبانه: ۰۲۱-۸۸۶۲۰۰۰

FarmaSOS.com

## GEARED UP FOR ANY ADVENTURE.

When it comes to transferring power from the engine to the wheels, your transmission is the critical link. With the BMW Z4 Roadster, a trio of transmission choices make your driving experience a smooth one. Best of all, each is designed for maximum efficiency as well as sporty performance. The sDrive28i offers either a satisfying 6-speed manual or a velvety-smooth 8-speed automatic; the sDrive35i and sDrive35is let you take charge of BMW's race-inspired 7-speed Double Clutch Transmission (DCT). Shift over to the BMW Z4 Roadster – and leave ordinary driving in the dust.

Get the latest information on BMW standard and optional features, packages and technical specifications. Visit [bmwusa.com](http://bmwusa.com), select the BMW model of your choice, and click on "Features & Specs."





امداد خودرو فارما

تلفن شبانه روزی: ۰۲۱-۸۸۸۶۲۰۸۵

FarmaSOS.com



اداره خودرو فارس

تلفن شماره ۰۱۱۵ - ۸۸۸۴۰۰۰۱

Farmcaros.com



اراد خودو فابرا

۰۲۱-۸۸۸۶۲۸۸

## M: THE ONLY LETTER MORE POWERFUL THAN Z.

FarmaSOS.com

For all the thrilling moves the Z4 Roadster makes, BMW is proud to enhance its race-winning heritage with the M Sport Package. The components of this dynamic package – included in the Z4 sDrive35is, and available in the Z4 sDrive28i and Z4 sDrive35i – deliver even sportier handling, thanks to the Adaptive M Suspension, the Aerodynamic kit with large air intakes in the front wing, and large 18-inch M light alloy wheels as well as an optional upgrade to 19" Light Alloy V-Spoke wheels. Interior upgrades are numerous, as well: take command in specially bolstered sport seats while gripping the leather-wrapped M sport steering wheel. Find excitement in even the smallest details, such as the M driver's footrest, gear lever knob and door-sill finishers; Anthracite headliner; Aluminum Carbon Shadow trim; and gray dials on the instrument cluster. The M Sport Package: the fastest way to turbocharge your Z4's sporty personality.

Get the latest information on BMW standard and optional features, packages and technical specifications. Visit [bmwusa.com](http://bmwusa.com), select the BMW model of your choice, and click on "Features & Specs."



ایراد خود روفارما

تلفن شماره ۰۲۱-۸۵۲۰۸۵

www.iranad.com



لراند خرید بارگ

www.503.com



امداد خودرو پارسیا

تلفن شماره دزدی ۸۸۲۰۸

Farinasos.com



ارزو خودرو  
تلفن شماره روزی ۰۲۱۰۰۰۰۰۰۰۰  
FarmaSOS.com

## CATERING TO YOUR EVERY WHIM.

The BMW Z4 Roadster is all about one thing: you. Even while nailing challenging curves, the Z4's plush interior, filled with the finest comfort and convenience features, ensures every trip is exactly your speed. This harmonious environment, clad in the most elegant upholstery and trim options, is enhanced by the Z4 Roadster sound system, including CD player, auxiliary input and 11 speakers. Select the Premium Sound System, and both the output and number of speakers increase. The on-board Navigation system provides high-resolution maps on the 8.8-inch monitor. And an expanded roster of BMW ConnectedDrive® features makes it easier than ever to maintain a mobile window on your life, giving you access to BMW Apps, online content, infotainment, and much more.

Get the latest information on BMW standard and optional features, packages and technical specifications. Visit [bmwusa.com](http://bmwusa.com), select the BMW model of your choice, and click on "Features & Specs."







## FREEDOM – A TOP PRIORITY.

BMW now lets you personalize the Z4 Roadster's retractable hardtop with a choice of two colors: brilliant Glacier Silver Metallic and stunning Jet Black. With the retractable roof up, the bold lines and available contrast of roof and body colors enhance the Z4's sporty low-slung silhouette. Inside, BMW's automatic climate control keeps the cabin continuously comfortable, while the heated rear-view window

remains frost-free. However, even the visual and sensory pleasures of the Z4 Roadster's sporty design with the top up cannot match the pure excitement of open-air driving. So at the touch of a button, the Roadster brings you closer to the elements, as the hardtop goes down in a mere 19 seconds – even while traveling at speeds of up to 25 miles per hour.

Get the latest information on BMW standard and optional features, packages and technical specifications. Visit [bmwusa.com](http://bmwusa.com), select the BMW model of your choice, and click on "Features & Specs."

# DRIVING TECHNOLOGY THAT SPRINGS TO LIFE.

Going beyond theories, hypotheses and intangibles, the track-tested technologies on board the BMW Z4 Roadster virtually defy the laws of physics, all for the benefit of driving pleasure. For example, the extensive, innovative use of stiff yet lightweight components in the suspension ensures a responsive road feel. There are also advanced systems within the Z4 Roadster that contribute to an even more satisfying driving experience. Within easy reach on the center console is the Driving Dynamics Control switch that calls up a choice of COMFORT, SPORT and SPORT+ driving modes to suit your mood by changing performance parameters – from shift characteristics and engine response, to the Dynamic Stability Control system and Servotronic functions. It's an immediate and gratifying way to turn sophisticated technology into simple thrills.

Get the latest information on BMW standard and optional features, packages and technical specifications. Visit [bmwusa.com](http://bmwusa.com), select the BMW model of your choice, and click on "Features & Specs."

امداد خودرو فارما

تلفن: شماره روزی: ۰۸۵-۱۸۸۶۲۰۳۱

Farmadros.com





امداد خودرو فارس

تلفن مشاوره: ۰۸۵-۸۸۸۶۲۰۸۵

FarmaSOS.com



امداد خودرو فارما

۰۲۱-۸۸۸۶۲۰۰

FarmaSOS.com

## BRING OUT THE BEAUTY IN THIS HIGH-PERFORMANCE BEAST.

When it comes to luxury performance, the BMW Z4 Roadster certainly looks the part. The exterior paint selections, trim packages and additional elements are designed to enhance its elegant curves and bold contours. Case in point: the electrifying style of the Hyper Orange Package. Among the exterior paint choices is the eye-catching Valencia Orange Metallic; inside, the leather-upholstered seats are finished in Black/Orange contrast stitching, complete with an accent

stripe running down the backrests and seat cushions. The rich Orange Alcantara® door trim panel and Metal Weave trim strip at the door openers and gear shift or selector knob also serve as reminders that the Z4 possesses a one-of-a-kind sporty personality.

Get the latest information on BMW standard and optional features, packages and technical specifications. Visit [bmwusa.com](http://bmwusa.com), select the BMW model of your choice, and click on "Features & Specs."



تلفن شبانه روزی ۰۸۵ ۸۸۶۲۰۸۵

[PharmaSOS.com](http://PharmaSOS.com)



BORN TO COMPETE,  
DESTINED FOR GLORY.

امداد خود رانان  
تلفن شبانه روزی: ۰۲۱-۸۸۸۶۲۰۸۵



The legacy of BMW racecars took another leap forward last year as a high-performance challenger entered the American Le Mans Series (ALMS): the Z4 GTE. In its debut season, the Z4 GTE won two races and helped BMW, BMW Team RLL and Dirk Müller place second in the Manufacturer's, Team and Driver's Championships.

The successor to the champion M3 racecar that scored back-to-back class titles and seven victories since its 2009 debut, the Z4 GTE was created from the ground up with lowered suspension and improved aerodynamics, perfectly complementing BMW Team RLL's track-honed, innovative engineering.

Now, in the 2014 season, BMW Team RLL is campaigning Z4 GTLM racecars in the new United SportsCar Championship – and it looks to be an even more exciting series than ever. Follow the action as it unfolds at [bmwusa.com/motorsport](http://bmwusa.com/motorsport).

امداد خودرو فارما

تلفن شبانه روزی: ۰۲۱-۸۸۸۶۲۰۸۵

FarmaSOS.com



## BMW ConnectedDrive So connected, you're free.



Every day, our world is becoming increasingly networked. Many BMW drivers, however, are better connected than the rest, obtaining information on the road, communicating by phone or email, and always being updated on the latest events. BMW ConnectedDrive encompasses all these services, including traffic features that allow BMW vehicles and their occupants to network with the outside world.



**BMW ConnectedDrive** services and apps provide versatile connections between the driver, vehicle and the outside world. BMW ConnectedDrive driver assistance systems enhance your convenience, active safety and peace of mind. BMW ConnectedDrive infotainment features make every mile even more enjoyable. And most are easily accessed and controlled through the on-board iDrive system, literally putting the world at your fingertips.

For more information, please see:

[bmwusa.com/connecteddrive](http://bmwusa.com/connecteddrive)



# BMW CONNECTED DRIVE®: CONVENIENCE, INFOTAINMENT AND SAFETY TECHNOLOGIES MEET IN ONE SUITE.

With BMW ConnectedDrive you stay in touch, no matter where you go. Its advanced communications and entertainment features create a network between driver, vehicle and environment, at any time and wherever you are. The following pages present special highlights in the areas of convenience, infotainment and safety. For a comprehensive overview, see [bmwusa.com/connecteddrive](http://bmwusa.com/connecteddrive).



## BMW ASSIST eCALL™

Enjoy peace of mind knowing that a friendly response specialist is there to help you 24/7, at the touch of a button. BMW Assist eCall includes Automatic Collision Notification, Emergency Request (SOS button) and Customer Relations.



## BMW TELESERVICE

As you're driving, the intelligent maintenance system, Condition Based Service, constantly monitors your vehicle's service needs. BMW Teleservice checks your vehicle's operating fluids and wear items. When any need replacing, it automatically transmits this data and upcoming service needs to your preferred BMW center. Your BMW Service Advisor then contacts you to set up a convenient appointment, and orders parts beforehand, reducing your service and wait time.



## BMW ONLINE

BMW Online gives you a personalized internet portal, delivered on the Control Display. Get up-to-date fuel prices and gas station locations; the latest weather forecasts, advisories and warnings; Dow Jones, S&P and NASDAQ indices; and the powerful reach of the Google® database. Read or hear news headlines aloud via text-to-speech technology. "Send to Mail" pinpoints your current location and planned destination, and allows you to send the information to any email account. Split-screen functionality lets you use BMW Online in tandem with Navigation maps and instructions, entertainment details and other on-board content.

# BMW CONNECTED DRIVE® SERVICES AND APPS: EVERYTHING YOU NEED, INTELLIGENTLY NETWORKED.

Want to find the quickest route around a traffic jam? Not a problem – if you have the BMW Navigation system with Real Time Traffic Information. Tired of the same old playlist? Let the AUPEO! Personal Radio app introduce you to a new world of music. How about finding a French restaurant in a strange city? Let Concierge Services locate it, make a reservation for you, and send the address and phone number directly to your BMW's Navigation system. **BMW ConnectedDrive** services and apps bring a whole new level of convenience and pleasure to your drive wherever you are.



## BMW APPS.

Access Social Networks, on-demand music and location sharing through your iPhone,<sup>®</sup> and see them on the Display screen.<sup>1</sup> Tune in to Web radio and search for stations from around the globe by name, location or genre. You can also store your favorite stations, find similar stations, display station information, and change the quality of the audio. Your favorite entries are on your iPhone, so you can take them from one vehicle to another.

<sup>1</sup> Requires BMW Online and BMW Apps option and a compatible phone. Please note:

- A broadband data link is required. The costs for this (e.g., data roaming) are regulated by the customer agreement with the mobile phone service provider.
- Not all features available while vehicle is in motion; see dealer for details.
- Web radio audio quality depends on the bit rate of the station, and data reception depends on your cell service. Data transfer comes over the mobile device.

## REAL TIME TRAFFIC INFORMATION (RTTI).

This feature makes you aware of traffic congestion in most large cities before you encounter it. RTTI displays and describes current local traffic information on your Control Display. In case of delays greater than five minutes, it suggests alternate routes.

تلفن شبانه روزی: ۸۵

## MOBILE OFFICE.

Use the time you spend in your vehicle even more effectively with BMW's Mobile Office feature.<sup>1</sup> For example, text messages and emails can be transferred from your Bluetooth<sup>®</sup> paired phone directly to the vehicle's Control Display and can be read back to you aloud using text-to-speech functionality and the vehicle's audio system.

<sup>1</sup> Not all mobile phones are compatible with Mobile Office, and some compatible phones support a limited number of Mobile Office functions. For the complete list of compatible mobile phones and the details regarding which Mobile Office functions are supported by each phone, please visit [bmwusa.com/bluetooth](http://bmwusa.com/bluetooth).

# DRIVER ASSISTANCE FEATURES: DESIGNED TO ENHANCE YOUR BMW DRIVING EXPERIENCE.

Driving a BMW isn't always the thrill of taking tight corners and accelerating onto a highway. There are the more mundane tasks of, say, finding and maneuvering into a parking space, or exiting an indoor garage onto a busy street and avoiding pedestrians you cannot see. For those times, innovative **BMW ConnectedDrive** driver assistance features make every moment behind the wheel as effortless and enjoyable as possible.



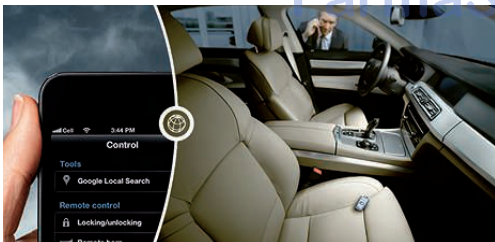
## PARK DISTANCE CONTROL.

This feature uses ultrasonic sensors in the front and rear bumpers to help you judge the distance to other cars and unseen objects when parking. The beeping becomes faster as your bumper approaches the object, turning into a constant tone when the distance is less than 12 inches.



## CONCIERGE SERVICES.

Wherever you travel, friendly Concierge Services representatives assist you with local restaurant and hotel recommendations, movie times and ticket information, flight arrival and departure gates and times, fuel prices and availability, and much more. You can also get the "Points of Interest" (POI) download, which allows the representative to send addresses and phone numbers to your vehicle. This information can also be transferred to your BMW Navigation system for route guidance. Then use your Bluetooth linked mobile phone to make a call.



## REMOTE SERVICES.

You're never far from your BMW when you have Remote Services. Locked out? Simply call the BMW Assist™ Response Center and provide your name and password, and they will unlock your driver-side door. If your BMW is stolen, file a police report, then call the BMW Assist Response Center; they will help the police locate your vehicle. (Check with your insurance company to see if this feature qualifies for a premium discount.) With the My BMW Remote app you can control your BMW from your smartphone. Lock your doors remotely; if you can't find your BMW in a parking lot, your screen will pinpoint it on a map – and on some models, even flash its lights.



## BMW EfficientDynamics

Less emissions. More driving pleasure.

BMW was one of the first manufacturers to pursue the goal of efficient driving technologies, as part of a multi-award-winning sustainability strategy. BMW EfficientDynamics represents an acclaimed standard package of innovative technologies that reduce fuel consumption and emissions, while simultaneously enhancing dynamic performance. Since 1995 BMW has been able to reduce the CO<sub>2</sub> emissions of its entire fleet by approximately 30 percent, and intends to achieve a further 25 percent reduction by 2020.



# BMW EFFICIENT DYNAMICS: MAKING A LITTLE GO A LONG WAY.

Under the umbrella of the BMW EfficientDynamics project, BMW is continuously developing innovative systems that will bring us closer to the goal of emissions-free driving in the long term.

**Eco-friendly technology.** The development of more efficient vehicles powered by conventional gasoline and diesel engines are continuing challenges. A comprehensive technology directive enables the reduction of fuel consumption and emissions, while at the same time increasing power output and driving enjoyment. These advances are based on innovations such as BMW TwinPower Turbo technology, Brake Energy Regeneration, Air Curtain front apron design, and many others.

**BMW ActiveHybrid.** With the BMW ActiveHybrid 7, BMW ActiveHybrid 5 and BMW ActiveHybrid 3, BMW has impressive hybrid production models in its line. All combine outstanding efficiency with superlative dynamic ability.

**BMW i.** The all-new BMW i brand is launching two completely new vehicle concepts for sustainable mobility in an urban environment; both are an important part of BMW EfficientDynamics technologies. Key features of the BMW i3 and BMW i8 include the use of lightweight materials such as carbon-fiber-reinforced plastic (CFRP), electric drive systems, powerful battery technology and eco-friendly production methods.

↗ [bmwusa.com/i](http://bmwusa.com/i)  
↗ [bmwusa.com/EfficientDynamics](http://bmwusa.com/EfficientDynamics)

امداد خودرو فارما

تلفن شبانه روزی: ۰۲۱-۸۸۸۶۲۰۸۵

FarmaSOS.com

## THE BMW Z4 ROADSTER'S EFFICIENT DYNAMICS INITIATIVES AT A GLANCE.

### **Auto Start-Stop function.**

The BMW Z4 sDrive28i with six-speed manual gearbox comes with the Auto Start-Stop function. During brief stops, for example at a red light, this function automatically switches off the engine to save fuel. A "Start-Stop" symbol in the Info Display indicates that the function is active.

### **Brake Energy Regeneration.**

To supply the battery with electrical energy, the generator (alternator) is usually driven using engine power, which requires fuel. With Brake Energy Regeneration, the alternator generates electricity only when you take your foot off the accelerator. Kinetic energy that was previously unharnessed is transformed into electrical energy, which is then fed into the battery. In this way, electricity is generated without consuming fuel.

### **Electric Power Steering.**

Unlike conventional, hydraulic steering systems, electric power steering draws power only during actual steering movements. When the steering wheel position is constant, the electric motor is inactive.

### **BMW TwinPower Turbo technology.**

This innovative twin-scroll turbocharging technology efficiently reclaims the energy contained in exhaust gases, using a twin-scroll charger with a double-flow exhaust system. It also combines advanced injection technologies and fully variable power control for superior efficiency to enhance dynamic performance.

### **High Precision Direct Injection.**

In this latest-generation direct fuel injection system, the piezo injectors are positioned very close to the spark plugs. They inject fuel at high pressure, with extreme precision, for very efficient combustion.

### **Lightweight construction.**

Our engineers use lightweight aluminum throughout our vehicles – for example, in the front section, or for the suspension, or in the construction of the TwinPower Turbo engines. Taken together, these weight savings lead to lower fuel consumption and better axle load distribution for more agility, especially in curves.

Not all BMW EfficientDynamics features are available on all models.  
Please see your authorized BMW center for details.

# BMW ENGINE TECHNOLOGY: A HERITAGE OF INNOVATION. A FUTURE OF SUSTAINABLE EXHILARATION.

From its inception almost a century ago as a manufacturer of aircraft engines, Bavarian Motor Works has been a world leader in engine design. In fact, the innovations shown below were so ahead of their time that BMW engineers still incorporate this technology into today's award-winning powerplants. Over the decades, BMW engines have led to countless wins at the racetrack. Even more important, their smooth, powerful and efficient performance has won over generations of driving enthusiasts. Today, adhering to the EfficientDynamics philosophy, BMW engineers are setting even higher goals: creating an engine template that can be scaled in size and adapted to new fuel sources – all while maintaining legendary BMW performance and efficiency. It's a revolutionary concept that is now becoming reality. Welcome to the exciting future of BMW power.

1936

## SEMI-HEMISPHERICAL VALVE DESIGN.

A design so advanced it helped the BMW 328 Mille Miglia win races in 1936 – and it's still in use today.



1955

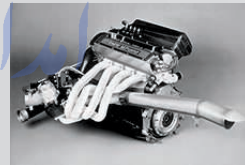
## ALL-ALUMINUM V-8 ENGINE.

The BMW 502 applied what is now called "intelligent lightweight engineering" to its then-awesome 160-hp V-8 engine.

1972

## FUEL INJECTION.

The BMW 2002tii featured fuel injection, a technology that would become a crucial building block in BMW EfficientDynamics advances.



1981

## DIGITAL MOTOR ELECTRONICS (DME).

Computerized engine monitoring and control revolutionize the performance, efficiency and reliability of BMW's World Championship-winning Formula 1® racecar.

1992

## MULTI-VALVE TECHNOLOGY.

In every BMW, four valves per cylinder let in more air for greater power, and push out exhaust more easily for greater efficiency.

2006

## ALUMINUM/MAGNESIUM COMPOSITE ENGINE BLOCK.

Technology from 1970s BMW racecar engines, this combines the strength to withstand high-revving performance with efficiency-enhancing light weight.



2007

## TWIN POWER TURBO ENGINES.

BMW twin-scroll turbocharging calls on high-precision direct injection and a host of other innovations for increased power and efficiency – without turbo lag.

2008

## BMW ADVANCED DIESEL WITH BLUE PERFORMANCE TECHNOLOGY.

BMW introduces America to a new form of diesel with amazing torque and power, quiet running, lower emissions and greater efficiency than ever before.

## TODAY: THE BMW TWIN POWER TURBO ENGINE.

Introduced in 2007, TwinPower Turbo technology is incorporated into every new BMW engine, whether gasoline-, diesel- or hybrid-powered. Utilizing BMW high-precision direct injection, Double-VANOS continuously variable camshaft timing, and Valvetronic individual intake valve control, TwinPower Turbo technology delivers vastly increased power, torque and efficiency when compared to normally aspirated engines of the same size.

300-hp BMW TwinPower Turbo inline six-cylinder engine.

## BMW GASOLINE-POWERED ENGINES.

Whether configured with four, six, eight or 12 cylinders, the latest BMW gasoline-combustion engines are designed to generate the highest ratio of power and thrilling performance to fuel consumption and emissions.

## BMW ADVANCED DIESEL.

Powerful, fast, quiet and fuel-efficient: these are the traits of BMW Advanced Diesel engines. Thanks to BluePerformance Technology, BMW diesel engines meet emissions standards in all 50 states. Managed by a high-performance electronic engine control unit, the turbocharger develops boost and extra power in immediate response to the smallest tap of the accelerator pedal, and stays strong throughout the rev range where you do most of your driving.



## BMW ACTIVE HYBRID.

BMW ActiveHybrid vehicles blend a TwinPower Turbo engine with an electric motor and high-performance lithium-ion battery. When compared to non-hybrid versions, BMW ActiveHybrid vehicles deliver greater fuel efficiency, fewer emissions and breathtaking acceleration.



## BMW i: BORN ELECTRIC.

BMW i makes its debut with the i3. Powered by an electric motor combined with an innovative lithium-ion battery, the i3 accelerates from 0–60 in approximately 7 seconds.<sup>1</sup> The BMW i8 is a plug-in hybrid electric vehicle. A 131-hp electric motor powers the front wheels, while a 231-hp three-cylinder gasoline engine turns the rear wheels achieving 0–60 mph in under 4.4 seconds<sup>1</sup> and reaching a top speed of 155 mph. In all-electric mode, it is capable of driving 22 miles with a top speed of 75 mph.

## THE EVOLUTION OF BMW EFFICIENT DYNAMICS TECHNOLOGY.

Smaller engines that generate greater power using less fuel.

### 1994 BMW 530i

- 3.0-liter V-8 engine with 5-speed automatic transmission
- 215 horsepower
- 16 city/25 highway mpg<sup>2</sup>
- 0–60 mph: 8.8 seconds<sup>1</sup>

### 2014 BMW 528i

- 2.0-liter inline four-cylinder TwinPower Turbo engine with 8-speed automatic transmission
- 240 horsepower
- 23 city/34 highway mpg<sup>2</sup>
- 0–60 mph: 6.1 seconds<sup>1</sup>

<sup>1</sup> BMW AG test results. BMW urges you to obey all posted speed laws and always wear safety belts.

<sup>2</sup> EPA-estimated figures are for comparison purposes only. Your actual mileage will vary, depending on speed, driving habits, trip length and driving conditions; actual mileage may be lower.



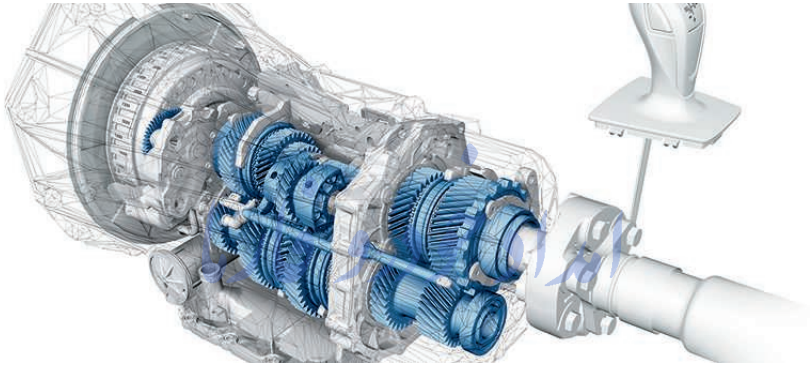
Pure driving dynamics – it's a quality embodied by every single BMW without exception. And the technical basis for this thrilling driving experience lies in the suspension. It ensures optimal contact with the road surface and ideal roadholding in every situation – the result of its near-perfect 50/50 weight distribution and an array of seamlessly combined innovative components. BMW engineers are continually reinventing and refining those classic BMW driving dynamics to ensure that every BMW chassis puts the driver in direct contact with the vehicle and inspires a passion for sporty driving – while also providing the highest levels of safety and comfort.





# THE FEELING OF DRIVING THE BMW Z4 ROADSTER IS SIMPLY INCREDIBLE. LIKE THE TECHNOLOGY BEHIND IT.

The BMW Z4 Roadster can be equipped with a whole host of innovative technologies to help you get the most out of each drive. Many of these systems are intelligently networked with each other, maximizing your active safety quotient – and your driving pleasure.



## **Adaptive M Suspension.**

This technologically advanced suspension system incorporates electronically controlled dampers that adapt to the style of the driver and driving conditions. Settings can be designated via the Driving Dynamics Control button. The Adaptive M Suspension also lowers the vehicle by approximately 0.4 inch without sacrificing ride comfort. Stiffer, more dynamic system settings can be selected by activating the SPORT or SPORT+ mode.

## **Rear-wheel drive.**

BMW's renowned driving technology provides inspired vehicle agility and maneuverability. Rear-wheel drive enables an ideal distribution of weight over the entire chassis suspension, delivering power and traction more precisely onto the pavement.

## **8-speed Sport Automatic transmission.**

The close spacing of gear ratios in the 8-speed Sport Automatic transmission allows maximum use of the optimum rev range. You enjoy dynamic performance and great ride comfort, combined with reduced fuel consumption and emissions.

## **7-speed Double Clutch Transmission.**

In the 7-speed Double Clutch Transmission (DCT), the various gears are assigned to two clutches. As one gear is disengaged, the next one is already engaged, for even faster gear changes that take just a few milliseconds – hardly more than the blink of an eye. With this uninterrupted power flow from the engine, you enjoy breathtaking acceleration combined with superb ride comfort, thanks to the almost imperceptible gear changes. In addition, the fast and precise selection of the most efficient gear significantly reduces fuel consumption in automatic mode.

## **Driving Dynamics Control.**

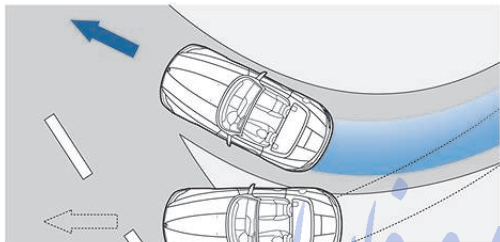
The ability to change driving characteristics in the BMW Z4 Roadster can be accomplished by pressing the Driving Dynamics Control button. To adjust engine-throttle response, transmission shift characteristics and power-steering assist, choose from three settings: COMFORT, SPORT and SPORT+ modes. In addition, the traction control feature can be disengaged when driving on sand, gravel, or deep-packed snow.

Not all features available on every model.

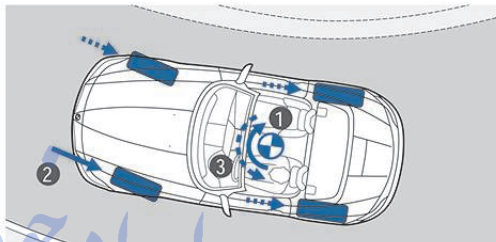
Get the latest information on BMW standard and optional features, packages and technical specifications. Visit [bmwusa.com](http://bmwusa.com), select the BMW model of your choice, and click on "Features & Specs."

# HIGH-TECH BODYGUARDS: ACTIVE AND PASSIVE SAFETY.

The Z4 Roadster is designed with BMW's full range of state-of-the-art active and passive safety technologies. Active safety features, such as Xenon Adaptive Headlights, powerful engines and large brakes, help you see and respond to potentially dangerous situations. Should an accident prove unavoidable, passive safety features, such as the Z4 Roadster Rollover Protection System and airbags, are designed to help protect you and your passenger. After a severe impact, a host of features spring into action: the doors automatically unlock, headlights and taillights flash, the starter cable is disconnected from the battery, and the fuel supply is cut off. Should any airbags deploy, response specialists are automatically alerted via BMW Assist eCall™ and notified of your location.



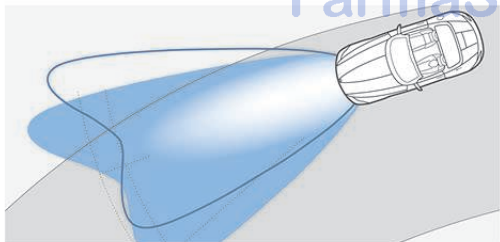
**Dynamic Stability Control (DSC)** is a braking control system that, when it senses an impending skid, helps to stabilize the vehicle in just milliseconds. If the system senses over- or understeer, it modulates engine power and can apply brakes individually to help keep the Z4 under control and going in the intended direction. For sportier driving or in deep snow, manually activate Dynamic Traction Control (DTC), to allow increased wheelspin.



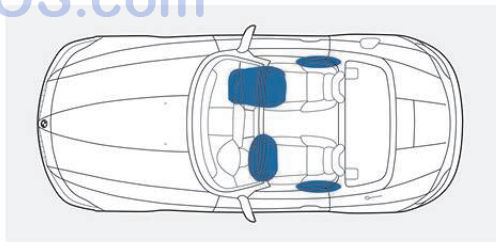
**Cornering Brake Control (CBC)** increases vehicle stability by proportioning the braking force while turning. When you brake in a turn, the pressure comes off the rear wheels, which (1) causes the vehicle to swerve inward (oversteer). Cornering Brake Control counteracts this action by asymmetrically adjusting brake pressure (2), creating stabilizing counter-torque (3) independently of the ABS system.

تلفن شبانه روزی: ۰۲۱-۸۸۸۶۲۰۸۵

FarmaSOS.com

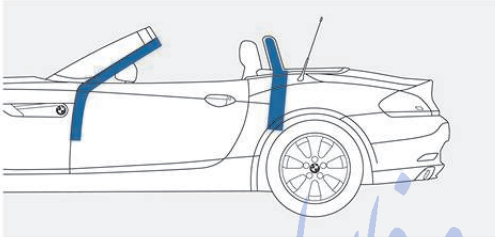


**Xenon Adaptive Headlights** automatically swivel to follow the curves of the road. The system uses data from on-board sensors and the steering wheel angle to determine the car's direction, then adjusts the headlights accordingly. The system offers outstanding nighttime visibility.

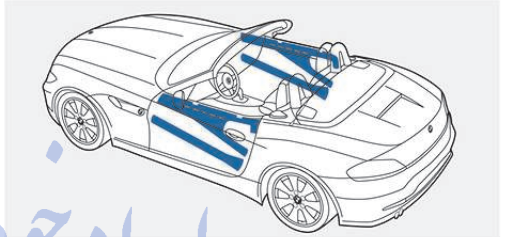


**Front airbags** help protect the head and upper body; **side airbags** significantly reduce the risk of injury to the head, ribcage and pelvic area in a side collision. If the passenger seat is unoccupied, these airbags are designed not to deploy. However, if a child seat is installed, these airbags must be manually deactivated. **Active knee protection** also helps protect knees in the event of severe impact.

Note: These pictures of airbags are for illustrative purposes only. Depending upon the type of accident, none, some or all airbags may deploy.



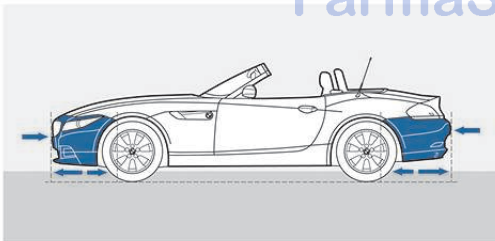
**Z4 Roadster Rollover Protection System** consists of two steel roll bars behind the headrests; they are connected with a highly stable chassis crossbeam. The system is completed by a bar of high-strength tubular steel integrated into the windshield frame for maximum safety.



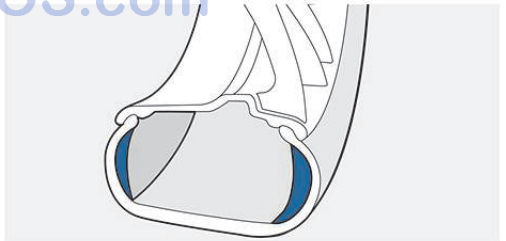
**Door reinforcements** are designed to provide maximum occupant protection in the event of a side impact. Added protection is provided by diagonal safety bars in the doors.

تلفن شبانه روزی: ۰۲۱-۸۸۸۶۲۰۸۵

FarmaSOS.com



**Impact-absorbing bumpers** and compressible "crush tubes" front and rear help absorb the force of impact in collisions up to 9 mph, helping to minimize damage to the vehicle's body and simplifying repairs. Only at higher impact speeds do structural supports begin to deform, dissipating impact energy to help protect occupants.



**Run-flat tires** maintain their shape and rim position even after suffering a complete loss of tire pressure, thanks to their reinforced sidewalls. They allow you to continue driving at a reduced speed until you reach a safe area to change a tire or wait for Roadside Assistance. The **Tire Pressure Monitor** alerts you when there is a drop in tire pressure; if the loss is severe, an acoustic warning is triggered.

Please see Owner's Manual for more information detailing allotted miles to travel and load weight rules for run-flat tires.

Get the latest information on BMW standard and optional features, packages and technical specifications. Visit [bmwusa.com](http://bmwusa.com), select the BMW model of your choice, and click on "Features & Specs."

## BMW Z4 sDRIVE35is – EXPONENTIALLY INTENSE.

The fire-breathing Z4 sDrive35is delivers pumped-up muscle, with horsepower rising to 335 and the 332 lb-ft of torque getting a temporary boost to 369 lb-ft. A lightning-quick 7-speed Double Clutch Transmission with paddle shifters puts all of this power right at your fingertips, for a blistering 4.8-second 0-60 run.<sup>1</sup> Oil and water coolers were specially added to provide increased cooling capacity. The front underscores the added muscle with a signature kidney grille featuring aluminum matte slats and chrome bezel, and behind the front wheels, distinctive Z4 sDrive35is badging. A sport exhaust system with chromed tailpipes adds a finishing touch to the rear diffuser of the M sport rear bumper. Distinctive 18-inch Star Spoke wheels (Style 295) with staggered-size performance tires come standard; 19-inch Double Spoke wheels (Style 326M) are also available. Inside, M door sills, Aluminum Carbon Shadow trim, and an instrument cluster with an exclusive colored dial denote special status. Refreshing design complemented by powerful performance technology make the Z4 sDrive35is an unmistakable yardstick whenever luxury-performance roadsters are compared.

<sup>1</sup> BMW AG test results. BMW urges you to obey all posted speed laws and always wear safety belts.



Wheel and tire specifications are subject to change. Get the latest information on BMW standard and optional features, packages and technical specifications. Visit [bmwusa.com](http://bmwusa.com), select the BMW model of your choice, and click on "Features & Specs."

امداد خودرو فارما

تلفن شبانه روزی: ۰۲۱-۸۸۸۶۲۰۸۵

FarmasOS.com



The stance: aggressively athletic.



An all-black interior sets a powerful, sporting tone.

امداد خودرو فارما

تلفن شبانه روزی: ۰۲۱-۸۸۸۶۲۰۸۵

Farmasos.com



Black Sapphire Metallic paint emphasizes the serious performance.

Leather on all seating surfaces; other components may be Leather or SensaTec.

## HYPER ORANGE PACKAGE: ENERGIZING SPIRIT.

The BMW Z4 Roadster was created for those who have a passion both for the road and for life. The Hyper Orange Package was designed to bring even greater zest to the Z4 Roadster driving experience. The Metal Weave interior trim pairs with sport seats upholstered in dramatic black Alcantara®/Leather, enriched by contrasting Orange details. Enhance the interior with your choice of Orange or Black Alcantara door trim insets and instrument panel bottom. High-Gloss Black trim in the center console surround and on door handle insets radiates a powerful energy. And, in addition to the full array of available Z4 Roadster paints, Valencia Orange Metallic – exclusive to this package – brilliantly combines with the contrasting Jet Black hardtop to emphasize the car's sporty character.



Get the latest information on BMW standard and optional features, packages and technical specifications. Visit [bmwusa.com](http://bmwusa.com), select the BMW model of your choice, and click on "Features & Specs."

امداد خودرو فارما

تلفن شبانه روزی: ۰۲۱-۸۸۸۶۲۰۸۵

FarmaSOS.com



The BMW Z4 Roadster glows in Valencia Orange Metallic.

Leather on all seating surfaces; other components may be Leather or SensaTec.



Electrifying: Alcantara/Leather combination with Orange accents.



The Orange Alcantara door trim insets extend a bright welcome.

تلفن شبانه روزی: ۰۲۱-۸۸۸۶۲۰۸۵



Feel the excitement rev in this emphatically sporty interior.

## BMW Z4 M SPORT PACKAGE: INSTANTLY UP YOUR GAME.

Give your Z4 sDrive28i or Z4 sDrive35i Roadster the competitive edge with the M Sport Package. An Aerodynamic kit, with specially shaped front and rear aprons, sharpens its ability to cut through wind. The 18-inch Star Spoke light alloy wheels (Style 325M) with mixed-size run-flat performance tires<sup>1</sup> show your sporting intentions; in the Z4 sDrive35i, you can also specify 19-inch V Spoke light alloy wheels (Style 296). A leather-wrapped multi-function M sport steering wheel ensures a firm grip – as does the Adaptive M Suspension, which delivers impressively agile road handling. Inside, specially bolstered sport seats hold you tight in curves. And when you're not admiring the drive, feast your eyes on exclusive interior touches, including Aluminum Carbon Shadow trim, an Anthracite headliner, and M badged door-sill finishers, footrest and gear shift lever.

<sup>1</sup> Run-flat tires do not come equipped with a spare tire and wheel. Driving over rough or damaged road surfaces, as well as debris, curbs and other obstacles, can cause serious damage to wheels, tires and suspension parts. This is more likely to occur with low-profile tires, which provide less cushioning between the wheel and the road. Be careful to avoid road hazards and reduce your speed, especially if your vehicle is equipped with low-profile tires. Performance tires are not recommended for driving in ice and snow conditions.

Wheel and tire specifications are subject to change. Get the latest information on BMW standard and optional features, packages and technical specifications. Visit [bmwusa.com](http://bmwusa.com), select the BMW model of your choice, and click on "Features & Specs."

امداد خودرو فارما

تلفن شبانه روزی: ۰۲۱-۸۸۸۶۲۰۸۵

FarmaSOS.com



The aggressive-looking front grille bares its aluminum matte slats.





Exceptional grip: the leather-wrapped multi-function M sport steering wheel.



M badged door-sill finishers signal the Z4's special nature.

تلفن شبانه روزی: ۰۲۱-۸۸۸۶۲۰۸۵

Farm33.com



The Aerodynamic kit adds specially shaped front and rear aprons.

## IVORY WHITE BURNT SIENNA PACKAGE.

Evoking a sensuous blend of rich chocolate and pure vanilla, the Ivory White Burnt Sienna Package is a glorious blend of quality materials and masterful craftsmanship. In exclusive Sparkling Brown Metallic paint, it gives off a warm, dark glow; other paint finishes are also available. The interior is upholstered in buttery-soft Ivory White and Black Nappa Leather. Black Leather, offset by brown stitching, also covers the top of the instrument panel and the upper door trim panels, while the bottom part of the instrument panel is upholstered in precisely matched Saddle Brown Nappa Leather hides. Finesline Brown Wood trim encircles the cabin, adding visual interest. When equipped with this package, the Z4 sDrive28i includes sport seats covered in Ivory White Nappa Leather with brown contrast – enhancing both the interior's elegance and its superior support in every driving situation.



Automatic climate controls offset by Finesline Brown Wood trim.

Get the latest information on BMW standard and optional features, packages and technical specifications. Visit [bmwusa.com](http://bmwusa.com), select the BMW model of your choice, and click on "Features & Specs."

تلفن شبانه روزی: ۰۲۱-۸۸۸۶۲۰۸۵

FarmSOS.com



The Sparkling Brown Metallic paint conveys a harmonious appeal.

Leather on all seating surfaces; other components may be Leather or SensaTec.



A sophisticated contrast: the center console reflects the interplay of Ivory White/Black Nappa Leather and Fine Line Brown Wood trim.

Matched to aesthetic perfection; the colors and materials in the interior.

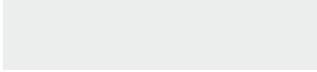
تلفن شبانه روزی: ۰۲۱-۸۸۸۶۲۰۸۵



The sporty and elegant interior provides optimal ergonomics for the driver.

# BMW Z4 ROADSTER.

## Exterior colors.



**300** Alpine White (Non-metallic)



**668** Jet Black (Non-metallic)



**A61** Crimson Red (Non-metallic)



**475** Black Sapphire Metallic



**A76** Deep Sea Blue Metallic



**B39** Mineral Gray Metallic



**A75** Melbourne Red Metallic



**B44** Valencia Orange Metallic



**A83** Glacier Silver Metallic



**B53** Sparkling Brown



**A96** Mineral White Metallic

## BMW Individual. Contrasting Hardtops.



BMW Individual



**668** Jet Black



**A83** Glacier Silver Metallic

## Interior trims.



**4AD** Brushed Aluminum



**4MW** Aluminum Carbon Shadow



**4CE** Anthracite Wood

The pages in this section of the brochure show available colors and materials for BMW Z4 Roadsters. Use these samples to compare paint, upholstery, trim colors and combinations. Please note that these samples are representations; they are not exact reproductions. To see the actual colors, visit your local BMW center. They will be happy to show you original samples and assist you with special requests.

For details on the availability of standard and optional exterior paints and upholstery materials and colors, please visit [bmwusa.com/byo](http://bmwusa.com/byo).

## Upholstery colors and materials.



KCSW Black SensaTec



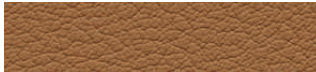
LYSW Black Kansas Leather



LYCY Canberra Beige Kansas Leather



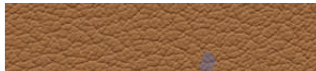
LYD1 Coral Red Kansas Leather



LYSY Walnut Kansas Leather



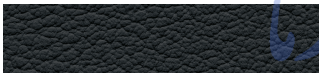
PAD1 Coral Red Extended Kansas Leather



PASW Walnut Extended Kansas Leather



PACY Canberra Beige Extended Kansas Leather



PASW Black Extended Kansas Leather

## Ivory White Burnt Sienna Package.



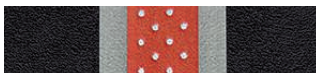
4E0 Finline Brown Wood interior trim



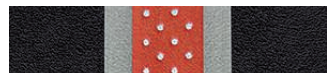
4FE Metal Weave interior trim



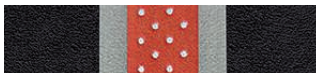
NAEW Ivory White/Black Nappa Leather upholstery



GMOE Black/Orange Alcantara®/Leather upholstery with Black highlight



GUOE Black/Orange Extended Alcantara/Leather upholstery with Black highlight



GMOF Black/Orange Alcantara/Leather upholstery with Black/Orange highlight



GUOF Black/Orange Extended Alcantara/Leather upholstery with Black/Orange highlight

## Equipment features and options.



**Exterior side-view mirrors** can be folded in automatically (such as at a car wash) via the integrated electric fold-in function, then returned into position at the touch of a button. Includes auto-dimming feature, memory function, heated nozzles, and tilt-down passenger-side exterior mirror for parking ease.

**Interior rear-view mirror** automatically dims to reduce headlight glare from following cars.



**Automatic high beams** use light sensor readings to automatically switch from high to low beams according to oncoming traffic or when the road is sufficiently illuminated.

**Rain sensor** uses infrared light to measure the amount of rain. When the wipers are in the "intermittent" mode, the rain sensor automatically adjusts the windshield-wiping interval as needed.

**Xenon Adaptive Headlights** for high and low beams provide brilliant clarity of the road ahead and to the side at night and in conditions with poor visibility. The dynamic auto-leveling feature adjusts for varying passenger and cargo loads, helping to keep headlight glare out of the eyes of oncoming drivers.

**Adaptive Headlights** provide optimum road illumination around corners, thanks to an electromechanical control system that directs the headlights into and around the bend as soon as the vehicle begins cornering.

**LED headlight-rings** circle both headlights and high beams, and also act separately as Daytime Running Lights and parking lights. **LED accent lights**, featuring a metal inset with BMW lettering, cut across the tops of the headlights.



**Turn signal indicators** integrated at the rear of the front wheel wells include tapered chrome-colored surrounds that accentuate the Z4's sporty lines.



**Retractable hardtop** can be easily raised or lowered in just 19 seconds at the touch of a button. The two-part hardtop folds neatly and stows in the trunk. The BMW Individual hardtop is available in a choice of two contrast colors: Jet Black and Glacier Silver Metallic.



**Ambiance lighting** offers conveniently placed lighting outside and inside the Z4 Roadster. Lights below the outside door handles illuminate the ground below the doors for 20 seconds after the Z4 is unlocked. Also includes interior Ambiance lighting, reading lights and footwell lighting.

Wheel and tire specifications are subject to change. Get the latest information on BMW standard and optional features, packages and technical specifications. Visit [bmwusa.com](http://bmwusa.com), select the BMW model of your choice, and click on "Features & Specs."



**Star Spoke light alloy wheels (Style 290)**, 17 x 8.0; and 225/45 **run-flat performance tires**<sup>1</sup>.



**Star Spoke light alloy wheels (Style 276)**, 18 x 8.0 front, 18 x 8.5 rear; and 225/40 front, 255/35 rear **run-flat performance tires**<sup>1</sup> (Includes increased top-speed limiter).



**V Spoke light alloy wheels (Style 515)**, 18 x 8.0 front, 18 x 8.5 rear; and 225/40 front, 255/35 rear **run-flat performance tires**<sup>1</sup>.

FarmaSOS.com



**V Spoke light alloy wheels (Style 296)**, 19 x 8.0 front, 19 x 9.0 rear; and 225/35 front, 255/30 rear **run-flat performance tires**<sup>1</sup> (Includes increased top-speed limiter).



**Star Spoke light alloy wheels (Style 295)**, 18 x 8.0 front, 18 x 8.5 rear; and 225/40 front, 255/35 rear **run-flat performance tires**<sup>1</sup> (Includes increased top-speed limiter).



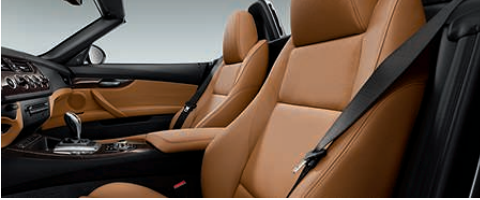
**Star Spoke light alloy wheels (Style 325M)**, 18 x 8.0 front, 18 x 8.5 rear; and 225/40 front, 255/35 rear **run-flat performance tires**<sup>1</sup> (Includes increased top-speed limiter).



**Double Spoke light alloy wheels (Style 326M)**, 19 x 8.0 front, 19 x 9.0 rear; and 225/35 front, 255/30 rear **run-flat performance tires**<sup>1</sup> (Includes increased top-speed limiter).

<sup>1</sup> Run-flat tires do not come equipped with a spare tire and wheel. Driving over rough or damaged road surfaces, as well as debris, curbs and other obstacles, can cause serious damage to wheels, tires and suspension parts. This is more likely to occur with low-profile tires, which provide less cushioning between the wheel and the road. Be careful to avoid road hazards and reduce your speed, especially if your vehicle is equipped with low-profile tires. Performance tires are not recommended for driving in ice and snow conditions.

## Equipment features and options.



**10-way power-adjustable sport seats** with integrated fixed headrests and driver's seat memory can be adjusted for seat height, fore-and-aft positioning, seat tilt, backrest tilt, and two-way manually adjustable thigh support. The 2-way power-adjustable side bolsters as well as higher seat bolsters add lateral support during sporty driving maneuvers.



**8-way power-adjustable seats** with integrated fixed headrests can be adjusted for seat height, fore-and-aft positioning, seat tilt, and backrest tilt. Includes two memory buttons for the driver's seat and exterior mirrors. **Power lumbar support** adds four-way adjustable comfort for the lower back. Lumbar support can be adjusted up/down and in/out.



**8-speed Sport Automatic transmission** enhances the Z4 sDrive28i's sporty performance, with its quick gear shifts and immediate response to the accelerator pedal. In addition to Adaptive Transmission Control (ATC) that learns your driving style, it offers two manual shift modes: using the gear selector lever or steering wheel-mounted paddle shifters, which are automatically included.

**7-speed Double Clutch Transmission** provides the Z4 sDrive35is and Z4 sDrive35i with smooth, lightning-quick gear changes by automatically shifting between two transmission structures. While one gear is disengaging, the next is already in position. The result is both quicker acceleration and enhanced fuel efficiency. (Includes steering wheel-mounted paddle shifters.)



**Driving Dynamics Control** allows you to tailor the Z4's performance by selecting COMFORT, SPORT or SPORT+ driving mode at the touch of a switch. This changes throttle response, steering assist, suspension damping (with Adaptive M Suspension) and automatic transmission shifting. Additionally, you can deactivate Dynamic Stability Control (DSC) and switch to Dynamic Traction Control (DTC), which allows wheelslip within defined limits when driving in deep snow, or for a sportier driving style.

**Adaptive M Suspension** lowers the chassis by 0.4 inches and electronically adjusts the dampers from sportingly tight to relaxed and comfortable, for greater agility and precise response.



**6-speed manual transmission** is smooth and optimally synchronized. Developed specifically for the Z4 Roadster, it features precise, short-throw gear shifts for an athletic driving experience. The narrow transmission ratios with an additional sixth gear make the engine even more responsive to your personal driving style. (Available only on 28i.)



**3-spoke leather-wrapped multi-function sport steering wheel** lets you keep both hands on the wheel while changing radio stations, CD selections, volume, and making mobile phone calls.





**Multi-function steering wheel buttons** on the left side operate the cruise control functions, while those on the right side control all audio functions, such as the radio and BMW-approved Bluetooth® mobile phone and Voice command.



**Multi-function leather-wrapped M sport steering wheel** includes paddle shifters when equipped with the Sport Automatic transmission or 7-Speed Double Clutch Transmission. An M shift lever knob with M emblem is also included when equipped with the 6-speed manual transmission.



**Premium Sound Package anti-theft AM/FM/CD player** generates full-bodied sound. Two-line readout displays names, audio and MP3 tracks. Includes SiriusXM® Satellite Radio with one-year subscription.

**BMW anti-theft AM/FM stereo/CD/MP3 player** (not shown) includes Radio Data System, reads/displays song title, Auto-Store and 3-channel FM diversity antenna.

**HD Radio™** receives free, digital AM/FM broadcasts across the U.S. in clear, static-free quality sound – AM sounds like FM; FM sounds like CD. Also enjoy "multicast" FM stations, as well as a variety of innovative data services. (For more information on HD Radio, visit [HDRadio.com](http://HDRadio.com).)

Get the latest information on BMW standard and optional features, packages and technical specifications. Visit [bmwusa.com](http://bmwusa.com), select the BMW model of your choice, and click on "Features & Specs."



**Air conditioning** provides an ideal environment year-round. Includes micro-filter, manual temperature adjustment and air recirculation, seven fan speeds, and knee-level vents.

**Automatic climate control system** allows each occupant to select their preferred temperature, as well as automatic or manual airflow and recirculation. The automatic recirculation control activates whenever certain air pollutants are detected. The system also offers a convertible mode for when the roof is down; micro-filter; defrost/defog and MAX A/C functions; sun and rain sensor; and auxiliary ventilation.



**Navigation system** features a pop-up, high-resolution, glare-free monitor. When not in use, it retracts back down, out of sight. Features include 3-D daytime and nighttime maps, zoom, travel planner, and an Assistance Window. The hard drive offers 12 GB of space that can hold up to 2,000 songs.

**Real Time Traffic Information** reports on potential traffic problems and suggests alternate routes.

**Voice command** lets you select radio stations, Navigation destinations, initiate mobile phone calls and more without taking your attention away from traffic.

## Equipment features and options.



**HiFi loudspeaker system with digital amplifier** (245 watt), 11 speakers and digital equalizer, which perfectly adapt the sound to the cabin environment. **Premium Sound System**, multichannel-enabled, with a 650-watt digital amplifier and 14 speakers, for a listening experience of unmatched intensity.



**Smartphone Integration** lets you snap in your Bluetooth® enabled mobile phone to make hands-free calls while recharging. Includes a connection for the charger and external antenna for enhanced reception.

**Auxiliary input port** lets you connect an external audio source, such as an iPod® or MP3 player.



**Storage package** maximizes the Z4's carrying capabilities. In the cabin, fastening nets are located in the passenger's footwell area and behind the seatbacks; a handy clothes hook is on each roll bar. In the trunk, cargo can be held down by lashing belts, and there is a convenient partition storage compartment that fits into the through-load opening.



**Luggage compartment** is surprisingly spacious for a roadster. With the hard-top down, the trunk holds 6.4 cu. ft. Put the top up, and it holds 10.9 cu. ft. – enough to hold a 46-inch golf bag. A movable partition, unique in the premium roadster class, creates enough room for a medium-size suitcase with the roof down – and much more with the roof up.



**Through-loading system** with integrated ski bag is an ideal way to expand the Z4 Roadster's stowing capabilities. It cleanly and securely holds two pairs of 67-inch skis and ski poles, or a 46-inch full-size golf bag. With the hardtop up, a second 46-inch golf bag can be stowed in the trunk. When using the through-loading system, the removable cover can be locked in position.



**Storage options** abound in the Z4. In addition to the storage bench behind the seats, there are fold-out storage compartments in both doors, two storage trays in the center console, a storage compartment in the dash (not available with Navigation system), one under the center console, and a spacious glove compartment.



**Comfort Access system** offers convenient keyless access to your vehicle. Carrying the remote key fob in a pocket or purse allows you to unlock the doors by touching the door handle.



**BMW Welt.** Take delivery of your new Z4 Roadster where it was born: in Europe. When you sign up for the BMW European Delivery Program, your first stop in Munich, Germany, is the BMW Welt – home to an automobile delivery center, automobile exhibitions, and an event hub all under one roof. Learn more about this unforgettable experience at [bmwusa.com/europeandelivery](http://bmwusa.com/europeandelivery).

## Original BMW Accessories.



**18-inch Star Spoke light alloy wheels (Style 276) and Foldable Rear Bicycle Carrier.** This high-quality Bicycle Carrier can hold up to three bikes. The lightweight, compact design allows for the carrier to be folded and stored when not in use. It secures to the Z4 Roadster using an integrated Click-On attachment for a clean look and easy removal. (European model shown.)



**Illuminated Door Sills** light up each time the door is opened – like the face of a Z4 driver.



**Z4 Embroidered Floor Mats**, made of thick pile carpet, are embossed with the Z4 logo.



**BMW Performance High-Gloss Black Kidney Grille** underscores the aggressive look of your BMW Z4 Roadster.

Driving a BMW is always a special experience – but it can be enhanced even further with Original BMW Accessories. These innovative products combine unique ideas, stunning design and easy functionality. Discover the wide range of Original BMW Accessories available to you, including accessories for the exterior, interior, technology, transporters, protection and details to customize your vehicle. For additional information on Original BMW Accessories, please visit your authorized BMW center or log on to [shopbmwusa.com](http://shopbmwusa.com).

## BUILD YOUR OWN BMW – AT [BMWUSA.COM/BYO](http://BMWUSA.COM/BYO).



FarmaSOS.com

At BMW, we want you to create your own Ultimate Driving Machine® That's why BMW offers one of the widest model ranges of any luxury automotive manufacturer. And each BMW model offers its own universe of personalizing possibilities.

It's easy to get the latest information on your favorite BMW model, whether you're at your desk or on the go. Visit [bmwusa.com](http://bmwusa.com) on your computer, tablet or smartphone, and click on the BMW model of your choice. Select **"Features & Specs"** to see all the standard features and available options and packages, as well as technical specifications.

You can then create the exact BMW model that fulfills your needs by clicking on **"Build Your Own"** – or visiting [bmwusa.com/byo](http://bmwusa.com/byo). Here you'll be able to select from among the many interior and exterior colors and trims, personalizing options and value-added packages. Build a BMW model that reflects your style, then view it in 360° detail. At the press of a button, see payment and financing options, get a same-day quote, download a product brochure and even schedule a test drive. BMW makes it easier than ever to make your ultimate driving dreams come true, at [bmwusa.com](http://bmwusa.com).

		Z4 sDrive28i	Z4 sDrive35i	Z4 sDrive35is
--	--	--------------	--------------	---------------

**Weight**

Unladen	lbs	3263 (3307)	[3527]	[3549]
Weight distribution, front/rear				
Manual transmission	%	47.3/52.7		
Automatic transmission	%	(47.7/52.3)	[49.1/50.9]	[49.4/50.6]

**Engine**

Liter/type/valves per cylinder		2.0/TwinPower Turbo Inline 4/4	3.0/TwinPower Turbo Inline 6/4	3.0/TwinPower Turbo Inline 6/4
Bore/stroke	in	3.3/3.5	3.3/3.5	3.3/3.5
Nominal output/rpm	hp	240/5000–6900	300/5800–6250	335/5900
Max torque/rpm	lb-ft	260/1450–4800	300/1400–5000	332/1500–4500 <sup>1</sup>
Compression ratio	:1	10.0	10.2	10.2

**Transmission**

Manual gear ratios		I/II/III:1 IV/V/VI:1 R:1	3.68/2.06/1.31 1.0/0.81/0.68 3.35		
Final drive ratio	:1		3.08		
Automatic gear ratios		I/II/III:1 IV/V/VI:1 VII/VIII/R:1	4.71/3.14/2.11 1.67/1.29/1.00 0.84/0.67/3.30	4.78/3.06/2.15 1.68/1.39/1.20 1.00/-/4.45	4.78/3.06/2.15 1.68/1.39/1.20 1.00/-/4.45
Final drive ratio	:1		3.73	2.56	2.56

**Performance**

Top speed (limited electronically)	mph	130/[155] <sup>2</sup>	130/[155] <sup>2</sup>	[155]
Acceleration 0–60 mph <sup>3</sup>	sec	5.5 (5.4)	5.1 (5.0)	[4.8]

**Fuel consumption<sup>4</sup>**

Manual transmission – city/highway	mpg	22/34		
Automatic transmission – city/highway	mpg	(22/33)	[17/24]	[17/24]
Fuel tank capacity	gal	14.5	14.5	14.5

**Wheels**

Tire dimensions	front	225/45	225/40	225/40
	rear	225/45	255/35	255/35
Wheel dimensions, front/rear		17 x 8.0/17 x 8.0	18 x 8.0/18 x 8.5	18 x 8.0/18 x 8.5
Material		light alloy	light alloy	light alloy

Figures in ( ) apply to Sport Automatic transmission.

Figures in [ ] apply to 7-speed Double Clutch Transmission (DCT).

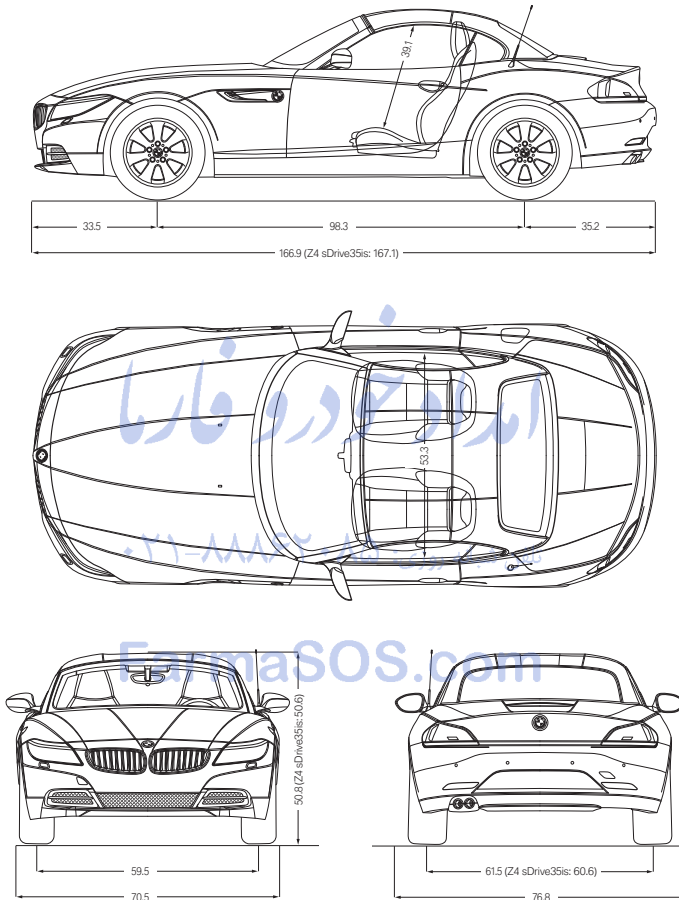
<sup>1</sup> An additional 37 lb-ft of temporary torque is delivered with the standard turbo boost function.

<sup>2</sup> Top speed with the M Sport Package or Sport Package.

<sup>3</sup> BMW test results. Actual acceleration results may vary depending on specification of vehicle, road and environmental conditions, testing procedures and driving style.

These results should be used for comparison only and verification should not be attempted on public roads. BMW urges you to obey all posted speed laws and always wear safety belts.

<sup>4</sup> EPA-estimated figures are for comparison purposes only. Your actual mileage will vary, depending on speed, driving habits, trip length and driving conditions; actual mileage will most likely be lower. Preliminary figures are subject to change.

**BMW Z4 Roadster**

All dimensions in the technical drawings are given in inches.

U.S. Importer: BMW of North America, LLC, Woodcliff Lake, NJ 07677. All illustrations and specifications contained in this brochure are based on the latest product information available at the time of printing. BMW reserves the right to make changes at any time, without notice, in colors, materials, equipment, specifications, design and models. BMW may, subject to legal requirements, determine the Model Year designation of its vehicles. The Model Year designation on any particular model may be longer or shorter than 12 months. Some vehicles pictured may contain non-U.S. equipment. Some models may be shown with optional equipment. While BMW NA makes all reasonable efforts to provide accurate information in this brochure, there is no guarantee or warranty of accuracy. Furthermore, we do not assume any liability for the accuracy or completeness of information presented. This brochure shall not be used or relied upon as a substitute for information that is available from your authorized BMW center. Further information can be obtained from your authorized BMW center or [bmwusa.com](http://bmwusa.com).

©2014 BMW of North America, LLC. Not to be reproduced wholly or in part without written permission of BMW NA. The BMW name, logo, model names and SAV are registered trademarks.

The Bluetooth word mark and logos are owned by the Bluetooth SIG, Inc. and any use of such marks by BMW is under license. iPhone, iPod and iPad are registered trademarks of Apple Inc. Other trademarks and trade names are the property of their respective owners.

We believe that a premium ownership experience should feature performance and luxury, as well as safety and convenience. We believe you should be able to drive a BMW to its potential, while enjoying peace of mind and reduced cost of ownership. That's the idea behind **BMW Ultimate Service®**: a suite of comprehensive programs and services that are included in every new BMW vehicle. It starts with the **New Vehicle/SAV Limited Warranty**,<sup>1</sup> providing you with coverage for the first four years or 50,000 miles, whichever comes first. Additionally, you enjoy 12-year, unlimited-mileage warranty protection against corrosion and rust

perforation.<sup>1</sup> BMW Ultimate Service continues with **BMW Maintenance Program** for up to the first four years or 50,000 miles,<sup>2</sup> **BMW Roadside Assistance**, and more. The BMW Z4 Roadster also comes with a number of BMW ConnectedDrive® services as standard, including **BMW Assist eCall™**<sup>3</sup> and **BMW TeleService**.<sup>3</sup> Other conveniences are **BMW Online**,<sup>4</sup> **Remote Services**<sup>5</sup> and **Concierge Services** with **Critical Calling**.<sup>5</sup>

## TAILOR-MADE FOR YOUR VEHICLE. BMW SERVICE.



**BMW Maintenance Program** is one of the most comprehensive maintenance programs in its class. We cover all factory-recommended maintenance for up to the first four years or 50,000 miles, whichever comes first. This includes scheduled oil services and inspections. Also covered is the replacement of items that are subject to normal wear and tear, such as brake pads, wiper blade inserts and engine drive belts.<sup>2</sup> And, thanks to BMW's advanced engineering, most owners enjoy a well-balanced maintenance schedule, with flexible routine service intervals that can save you time. When your vehicle requires attention, your authorized BMW center ensures that it receives only genuine BMW parts – your assurance of exacting quality standards.

For more details on BMW Ultimate Service and the BMW Maintenance Program, visit your authorized BMW center or log on to [bmwusa.com/ultimateservice](http://bmwusa.com/ultimateservice).



**BMW Assist eCall**,<sup>3</sup> a safety feature of BMW ConnectedDrive, lets you enjoy peace of mind knowing that a friendly response specialist is there to help you, 24/7, at just the push of a button. This includes Emergency Request (SOS button), Automatic Collision Notification, and Customer Relations. **BMW TeleService**<sup>3</sup> continually monitors specific vehicle parts that are subject to wear and tear, as well as services that require attention at regular intervals, such as vehicle service inspections. This data is automatically transmitted to your authorized BMW center, which informs a BMW Service Advisor to call and schedule a convenient service appointment. You don't have to keep track of when your vehicle requires routine maintenance. An added benefit: any needed maintenance service parts will already be on hand, so your BMW is serviced and returned to you as quickly as possible. And because they use only Original BMW Parts, you can rely on expert fit and long-lasting BMW quality.



**BMW Roadside Assistance** is provided free of charge for the first four years – with no mileage limit. Call **1-800-332-4BMW (4269)** for friendly on-the-road help, 24/7, anywhere in the United States, Canada and Puerto Rico. This includes everything from flat-tire changes, emergency gasoline and lock-out service, to towing, alternative transportation and even trip-interruption benefits. This service also provides valuable trip-routing advice. **تلفن سبانه روزی: ۱-۸۰۰-۳۳۲-۴BMW**  
**BMW Online**<sup>4</sup> provides up-to-date web information: business and stock reports, as well as weather updates. BMW Online also includes **MyInfo**, which allows you to send business locations and street addresses with their associated phone numbers from the Google Maps™ website directly to your BMW. The destination can be sent to your Navigation system for turn-by-turn directions.

**Remote Services**<sup>5</sup> includes Remote Door Unlock, Stolen Vehicle Recovery, and access to the My BMW Remote app, which allows you to control your BMW from your mobile device.

For the ultimate in coverage, there's **Concierge Services**.<sup>5</sup> You'll enjoy unlimited access to personalized Directions and services for restaurant and hotel recommendations, with the destination address and phone number not only sent right to your BMW, but also transferred to your Navigation system for route guidance. Another useful Concierge feature: **Critical Calling**. This lets you make up to four operator-assisted calls per year, up to five minutes per call, if your mobile phone is not available, or if its battery is discharged.



## THE MOST EXCITING PLACE IN AMERICA TO DRIVE A BMW.

### The BMW Performance Center in Spartanburg, SC.

Just beyond the foothills of the Carolinas' Blue Ridge Mountains lies the \$12 million BMW Performance Center. This sprawling, modern complex houses the world-famous BMW Performance Driving school, as well as the Zentrum Museum, BMW Boutique, BMW Delivery Center, and a Corporate Conference Center. Nearby is BMW's only manufacturing facility in the U.S., where models, such as the SAV,<sup>6</sup> are built for export worldwide. It's a unique place where BMW enthusiasts can spend days – or, in the surrounding area, an entire vacation.





## EXPERIENCE MORE WITH BMW.



**BMW Financial Services.** Arranging to buy or lease a BMW is easier than you may think. Your authorized BMW center offers leasing and financing to suit your personal needs through BMW Financial Services.<sup>1</sup> Start the process at our website, where you can build your "dream vehicle," get an estimate on a monthly lease or financing payment, submit a credit application to BMW Financial Services – and get approval – all online!<sup>2</sup> To find out how BMW Financial Services can help put you behind the wheel of your favorite BMW model, log on to [bmwusa.com/ifs](http://bmwusa.com/ifs) or call, toll-free, **1-800-578-5000**.



**BMW Virtual Center.** If you get the sudden urge to shop for a BMW but your authorized BMW center is closed, there's good news – the BMW Virtual Center is open 24 hours a day! Log on to [bmwusa.com/byo](http://bmwusa.com/byo), and choose the model that interests you. Configure the BMW of your dreams, and see what the monthly payments would be. You can even send the specifications to your authorized BMW center, apply for financing, or request a test drive – all online!



**BMW Magazine.** A fascinating view of the latest events and products in the world of BMW, including travel reviews, personality profiles, and the latest BMW technologies. **BMW Magazine** is sent to new owners and lessees twice a year.



**BMW Performance Driving School.** Take your driving skills to the next level. Behind the wheel of new BMWs and under the guidance of professional instructors, you'll hone your driving skills on a 1.7-mile driving course that can be configured in a multitude of ways. In One- and Two-Day Schools you can tackle the skid pad, slalom course and water walls. The BMW Performance Driving School is about control and pushing a BMW to its limits – and yours. Visit [bmwusa.com/pds](http://bmwusa.com/pds).

### Performance Center Delivery.

You'll always remember the fun of taking delivery of your new BMW – especially with BMW Performance Center Delivery in Spartanburg, SC. After enjoying dinner and an overnight stay at a first-class hotel, we'll take you and your companion to the Performance Center where a Product Specialist will give you an in-depth introduction to your new BMW. Then at the Performance Driving School, you'll get tips from a professional driving instructor as you explore the dynamic capabilities of a similar model. It's exciting, it's enlightening – and it's all compliments of BMW with your new vehicle. To learn

more about the BMW Performance Center, call **1-888-345-4269** or visit [bmwusa.com/pdsdelivery](http://bmwusa.com/pdsdelivery).



The **BMW Welt** ("BMW World") delivery and brand-experience center in Munich is bold proof of BMW's passion for design. When you take advantage of the BMW European Delivery Program,<sup>3</sup> this is where you will meet your new BMW – in a personalized process that is highly dramatic and totally unforgettable. (You might also realize substantial savings that just may pay for your trip.) While you're there, marvel at the historic BMWs in the Museum; learn about our engineers' newest innovations in the Technology and Design Atelier; and take a tour of the plant to experience firsthand the state-of-the-art methods used to create a BMW. Then comes the unique experience of driving your new BMW on the roads it was designed for. To learn more, visit [bmwusa.com/europeandelivery](http://bmwusa.com/europeandelivery).

<sup>1</sup> See your authorized BMW center for details on these limited warranties.

<sup>2</sup> All BMWs come with the BMW Maintenance Program standard for up to 4 years or 50,000 miles from the in-service date, whichever comes first. The BMW Maintenance Program covers factory-recommended maintenance services as determined by the Service Interval Indicator for all new eligible MY2004 and later BMW vehicles. Exclusions from coverage include: gasoline, gasoline additives, windshield washer fluid and additives, battery, tires, wheels, wheel alignment and tire balancing. All work must be performed by an authorized BMW center. For all Model Year 2015 and later vehicles sold or leased by an authorized BMW center on or after July 1, 2014: BMW Maintenance Program coverage is not transferable to subsequent purchasers, owners or lessees. Certain limitations and exclusions apply to this program; please see [bmwusa.com/ultimateservice](http://bmwusa.com/ultimateservice) or ask your authorized BMW center for details.

<sup>3</sup> On 2015 and later BMW Z4 Roadster models, BMW Assist eCall and BMW TeleService are standard and include 10 years of service. Remote Services (included in Technology Package) includes 10 years of service. In order to receive these services, a subscriber agreement must be completed and transferred to the BMW Assist Response Center. GPS and underlying wireless services must be available and functioning, vehicle ignition must be turned on (except for Remote Services), battery must be charged and connected, and vehicle's electrical system operational. Due to wireless carrier coverage, services may be limited in certain geographic areas. Call toll-free 1-888-333-6116, go to [bmwassist.com](http://bmwassist.com), or visit your authorized BMW center for additional program details. Services are subject to the terms and conditions of your subscriber agreement.

<sup>4</sup> Comes with a 3-year subscription and is included in Technology Package. Subject to the terms and conditions of your subscriber agreement. Visit [bmwusa.com/connecteddrive](http://bmwusa.com/connecteddrive) for details.

<sup>5</sup> Concierge Services (optional and requires Technology Package) comes with a 3-year subscription. Subject to the terms and conditions of your subscriber agreement. Please go to [bmwusa.com/connecteddrive](http://bmwusa.com/connecteddrive) for additional details on Concierge Services.

<sup>6</sup> Subject to credit approval and other terms and conditions.

<sup>7</sup> Not all models available for BMW European Delivery Program. Please go to [bmwusa.com/europeandelivery](http://bmwusa.com/europeandelivery) or visit your authorized BMW center for details.

More about BMW



The Ultimate  
Driving Machine®

bmwusa.com  
1-800-334-4BMW

اراد خودرو فارما

شماره شبانه روزی: ۰۲۱ ۸۸۸۶۲۰۸۵

FarmaSOS.com

#### BMW and the environment.

BMW is a strong proponent of the environment and social responsibility. We launched BMW EfficientDynamics back in 2000 – the philosophy of providing greater power with increased efficiency and fewer emissions. This has resulted in significant benefits today – for our customers, the climate and the environment.

That year, ecological sustainability was also declared one of BMW's core strategic principles; it is now firmly anchored in our entire production chain. It starts with the development of fuel-saving and alternative vehicle concepts, continues with environmentally friendly production processes, and ends with innovative recycling methods. This effort has been recognized worldwide; in 1999, BMW AG – the parent company of BMW of North America and BMW Manufacturing Co. in Spartanburg, SC – was the first automotive company to be represented on the Dow Jones Sustainability Group Index. It has remained on the Index ever since; moreover, since 2005, BMW has been voted the world's most sustainable automobile manufacturer. At BMW, we strive for and achieve high performance in all we do.

BMW recommends **EDGE**

